

AMU BRASS

[HOMEPAGE](#)
[ABOUT US](#)
[PRODUCTS](#)
[CONTACT US](#)
[RESOURCES](#)


WORLDWIDE EXPORT



OUR PRODUCTS

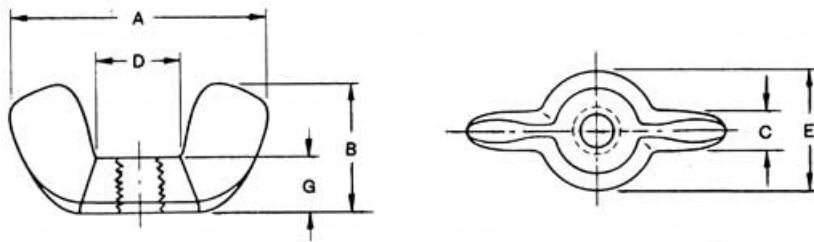
DIN 315 Brass Wing Nuts



DIN 315 Brass Wings Nuts

Material : BS 2874 - CZ 121 Pb3 CZ 122 UNS C36000
CDA 360 DZR Brass BS 2874 - CZ 131 CW 614 N EN
12164 BS 2874 - CZ 114 BS 2874 - CZ 115

Forged wing nuts are available in a variety of wing shapes and boss dimensions. The above dimensions are for Type A, also known as Type 1 Style A-1 of Federal Specification FF-N-845. Stamped wing nuts are also available by request. For more information, ask your Fast Fastners sales representative.



DIAMETER SIZE		SERIES	A		B		C		D		E		G	
			WING SPREAD		WING HEIGHT		WING THICKNESS		BETWEEN WINGS		BOSS DIAMETER		BOSS HEIGHT	
			max	min	max	min	max	min	max	min	max	min	max	min
3	0.099	H	0.720	0.590	0.410	0.280	0.110	0.070	0.210	0.170	0.330	0.290	0.140	0.010
4	0.112	H	0.720	0.590	0.410	0.280	0.110	0.070	0.210	0.170	0.330	0.290	0.140	0.010
5	0.125	*L	0.720	0.590	0.410	0.280	0.110	0.070	0.210	0.170	0.330	0.290	0.140	0.010
5	0.125	H	0.910	0.780	0.470	0.340	0.140	0.100	0.270	0.220	0.430	0.390	0.180	0.140
6	0.138	L	0.720	0.590	0.410	0.280	0.110	0.070	0.210	0.170	0.330	0.290	0.140	0.010
6	0.138	*H	0.910	0.780	0.470	0.340	0.140	0.100	0.270	0.220	0.430	0.390	0.180	0.140
8	0.164	*L	0.910	0.780	0.470	0.340	0.140	0.100	0.270	0.220	0.430	0.390	0.180	0.140
8	0.164	H	1.100	0.970	0.570	0.430	0.180	0.140	0.330	0.260	0.500	0.450	0.220	0.170
10	0.190	*L	0.910	0.780	0.470	0.340	0.140	0.100	0.270	0.220	0.430	0.390	0.180	0.140
10	0.190	H	1.100	0.970	0.570	0.430	0.180	0.140	0.330	0.260	0.500	0.450	0.220	0.170
12	0.216	*L	1.100	0.970	0.570	0.430	0.180	0.140	0.330	0.260	0.500	0.450	0.220	0.170
12	0.216	H	1.250	1.120	0.660	0.530	0.210	0.170	0.390	0.320	0.580	0.510	0.250	0.200
1/4	0.250	*L	1.100	0.970	0.570	0.430	0.180	0.140	0.330	0.260	0.500	0.450	0.220	0.170
1/4	0.250	R	1.250	1.120	0.660	0.530	0.210	0.170	0.390	0.320	0.580	0.510	0.250	0.200
1/4	0.250	H	1.440	1.310	0.790	0.650	0.240	0.200	0.480	0.420	0.700	0.640	0.300	0.260
5/16	0.313	*L	1.250	1.120	0.660	0.530	0.210	0.170	0.390	0.320	0.580	0.510	0.250	0.200

5/16	0.313	R	1.440	1.310	0.790	0.650	0.240	0.200	0.480	0.420	0.700	0.640	0.300	0.260
5/16	0.313	H	1.940	1.810	1.000	0.870	0.330	0.260	0.650	0.540	0.930	0.860	0.390	0.350
3/8	0.375	*L	1.440	1.310	0.790	0.650	0.240	0.200	0.480	0.420	0.700	0.640	0.300	0.260
3/8	0.375	R	1.940	1.810	1.000	0.870	0.330	0.260	0.650	0.540	0.930	0.860	0.390	0.350
7/16	0.438	*L	1.940	1.810	1.000	0.870	0.330	0.260	0.650	0.540	0.930	0.860	0.390	0.350
7/16	0.438	H	2.760	2.620	1.440	1.310	0.400	0.340	0.900	0.800	1.190	1.130	0.550	0.510
1/2	0.500	*L	1.940	1.810	1.000	0.870	0.330	0.260	0.650	0.540	0.930	0.860	0.390	0.350
1/2	0.500	H	2.760	2.620	1.440	1.310	0.400	0.340	0.900	0.800	1.190	1.130	0.550	0.510

* Designates preferred series/sizes fo each diameter. Series designations are:

L = Light Series

H = Heavy Series

R = Regular Series

Others Terms : DIN 315 Brass Wing Nuts, Small Pattern Hex Nuts, Brass Hex Brass Hex Nuts Slotted, Brass Jam Nuts, Jam Nuts Standard and Non Standard Brass Nuts, Standard Brass Nuts, Non Standard Brass Nuts, Small, Pattern, Patterns, Hex, Nuts, Nut, Hex Nuts Small Pattern, Nuts Coupling, Eye Coupling Nuts, Eye Nuts Coupling, Brass Slotted Hex Nuts, Nylon Insert Lock Nuts, Insert Lock Nuts Nylon, Brass Coupling Hex Nuts, Brass Acorn Nuts, Brass Nuts Acorn, Brass Flange Nuts, Flange Nuts, Machine Screw Nuts, Screw Machine Nuts

Brass Machine Screw Nuts | Nylon Insert Brass Nyloc nuts Locknuts | Brass Hex Nuts | Brass Hex Hexagonal Jam Nuts | Brass Cap Nut | Brass Jam Nuts | Welding Nuts | Brass Acorn Nuts | Brass Flange Nuts Flanged Back nuts | DIN 557 Brass Square Nut | Slotted Hex Nuts | Brass Coupling Nuts Hex Nuts | Castle Nuts | Brass Heavy Hex Nuts | Heavy Hex Jam Nuts | Eye Coupling Nuts | Small Pattern Hex Nuts | DIN 315 Brass Wing Nuts

[Homepage](#) | [About Us](#) | [Brass Products](#) | [Brass Resources](#) | [Contact Us](#)

Neutral Links Brass Neutral bars | Brass Inserts | Brass Nuts | Brass Anchors | Brass Fasteners | Brass Bolts
Brass Hex Nuts | Brass Washers | Jam Nuts Brass nuts Coarse / Fine nuts, Thread | BRASS Turned Parts | Copper Fittings
Copper parts India Jamnagar

- [Brass Neutral Links](#) [Brass Neutral Bars](#) • [Brass Inserts](#) • [Brass Nuts](#) • [Brass Anchors](#) • [Brass Fasteners](#)
- [Brass Turned Parts](#) • [Brass Cable Glands](#) • [Brass Hose Fittings](#) • [Brass Casting](#) [Non-Ferrous Castings](#)
- [Copper Fittings and Copper Parts](#) • [Copper Lugs Terminals](#) • [Copper - Bronze Grounding Clamps](#) • [Copper - Bronze Grounding Rods](#) • [Stainless Steel Fasteners](#) • [Stainless Steel Hose Fittings](#) • [Brass Screws](#) • [Bronze Fittings](#)
- [Bronze Casting](#) • [Brass PPR fittings](#) • [Brass Washers](#) [Copper Washers](#) • [Brass Terminals](#) [Battery terminals](#) • [Brass Connectors](#) • [Brass Terminal Blocks](#)

Contact Us

Amu Brass Parts and Components

**GIDC, Shanker Tekri Udoygnagar,
Jamnagar 361004
Gujrat INDIA**

Phone : +91-22-43449300, +91-22-43449323

Fax: +91-22-22834046, +91-22-40023682

Email: mktg@amubrass.com

Visit Our Website : www.amubrass.com